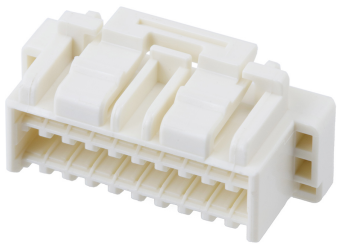




Part Number : [5031492000](#)
Product Description : CLIK-Mate Plug Housing,
1.50mm Pitch, Dual Row, Positive Lock, 20
Circuits, Natural
Series Number : 503149
Status : Active
Product Category : Connector Housings



Documents & Resources


Drawings
[5031492000_sd.pdf](#)

3D Models and Design Files
[5031492000.dxf](#)
[5031492000.pdf](#)
[5031492000_stp.zip](#)

Specifications
[AS-503149-001-001.pdf](#)
[SPK-503149-001-001.pdf](#)
[5031490000-PS-000.pdf](#)
[5031491000-PS-000.pdf](#)
[5031491001-PS-000.pdf](#)
[5031491002-PS-000.pdf](#)
[5031491003-PS-000.pdf](#)
[PS-505406-001-001.pdf](#)

Product Environment Compliance

Compliance

| | |
|--------------------|---|
| GADSL/IMDS | Not Relevant |
| China RoHS |  |
| EU ELV | Not Relevant |
| Low-Halogen Status | Not Low-Halogen per IEC 61249-2-21 |
| REACH SVHC | Not Contained per D(2024)4144-DC (27 June 2024) |
| EU RoHS | Compliant per EU 2015/863 |

Multiple Part Product Compliance Statements

- Eu RoHS
- REACH SVHC
- Low-Halogen

Multiple Part Industry Compliance Documents

- IPC 1752A Class C
- IPC 1752A Class D
- Molex Product Compliance Declaration
- IEC-62474
- chemSHERPA (xml)

EU RoHS Certificate of Compliance

Part Details

General

| | |
|--------------|---|
| Status | Active |
| Category | Connector Housings |
| Series | 503149 |
| Description | CLIK-Mate Plug Housing, 1.50mm Pitch, Dual Row, Positive Lock, 20 Circuits, Natural |
| Application | Signal, Wire-to-Board |
| Product Name | CLIK-Mate |
| UPC | 800756961699 |

Agency

| | |
|----|--------|
| UL | E29179 |
|----|--------|

Physical

| | |
|-----------------------|---------|
| Circuits (maximum) | 20 |
| Color - Resin | Natural |
| Gender | Plug |
| Glow-Wire Capable | No |
| Keying to Mating Part | None |
| Lock to Mating Part | Yes |
| Material - Resin | PBT |
| Number of Rows | 2 |
| Packaging Type | Bag |

| | |
|-------------------------------|----------------|
| Panel Mount | No |
| Pitch - Mating Interface | 1.50mm |
| Pitch - Termination Interface | 1.50mm |
| Polarized to Mating Part | Yes |
| Stackable | No |
| Temperature Range - Operating | -40° to +105°C |

Mates With / Use With

Mates with Part(s)

| Description | Part Number |
|---|---------------|
| 1.50mm Pitch CLIK-Mate Right-Angle Dual Row PCB Receptacles | <u>213228</u> |
| 1.50mm Pitch CLIK-Mate Right-Angle Dual Row PCB Receptacles | <u>503148</u> |
| 1.50mm Pitch CLIK-Mate Vertical Dual Row PCB Receptacles | <u>213227</u> |
| 1.50mm Pitch CLIK-Mate Right-Angle Dual Row PCB Receptacles | <u>503154</u> |

Use with Part(s)

| Description | Part Number |
|---|------------------|
| Pre-Crimped Lead CLIK-Mate 1.50mm Male-to-CLIK-Mate 1.50mm Male, Tin (Sn) Plating, 300.00mm Length, 24 AWG, Black | <u>797581011</u> |
| 1.50mm Pitch CLIK-Mate Male Crimp Terminals | <u>502579</u> |
| 1.50mm Pitch CLIK-Mate Male Crimp Terminals | <u>503429</u> |
| CLIK-Mate 1.50mm Pitch Male Crimp Terminals | <u>213028</u> |
| CLIK-Mate 1.50mm Pitch Male Crimp Terminals | <u>213029</u> |
| Pre-Crimped Lead Clik-Mate Male-to-Clik-Mate Male | <u>215710</u> |
| Pre-Crimped Lead Clik-Mate Male-to-Pigtail | <u>215711</u> |
