

恩 施 企 業 有 限 公 司

ABACUS INTERNATIONAL CO., LTD

承 認 書

品名: 062 Pwr Conn Plug Prebent Pnl Mnt 9Ckt

客戶料號:

莫仕料號: 46999-0717

承 認 日 期	106 年 09 月 20 日
承 認 欄	

恩 施 企 業 有 限 公 司

ABACUS INTERNATIONAL CO.,LTD

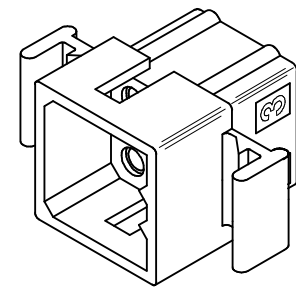
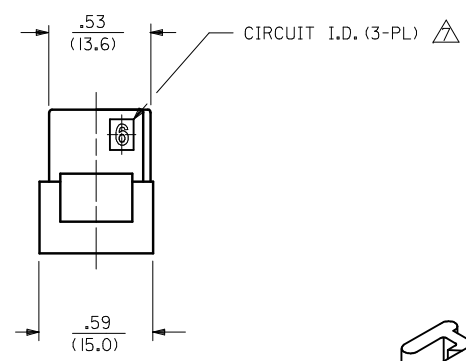
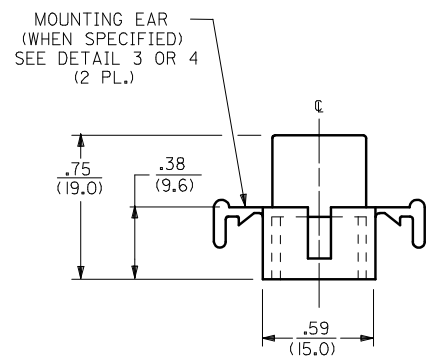
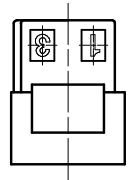
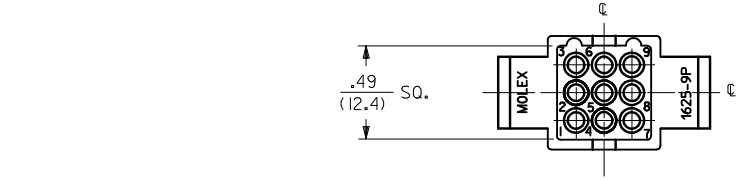
北市內湖區瑞光路 192 號 3F-1

TEL : (02)27975598 FAX : 27985828

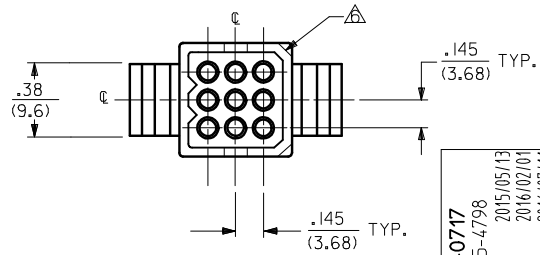


請 承 認 用

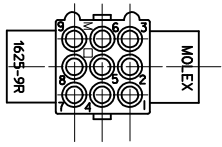
西元 2017 年 09 月 20 日



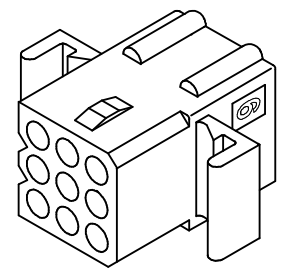
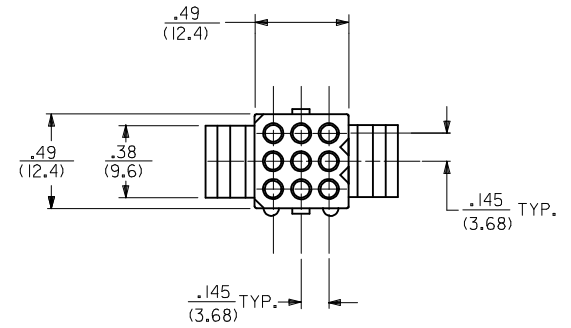
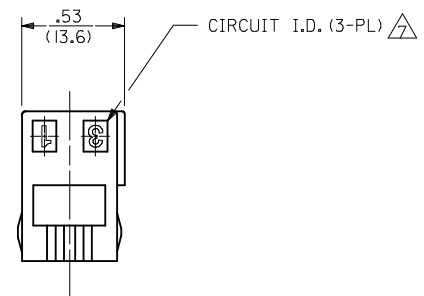
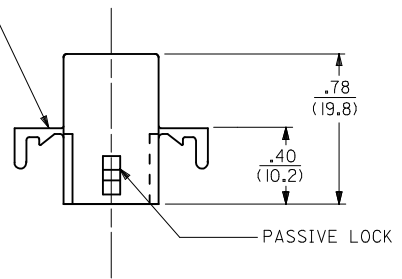
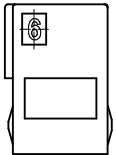
PLUG



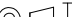
ADD 46999-0717		2015/05/13		2016/02/01		2016/07/11		DESCRIPTION REV		QUALITY SYMBOLS ▽=0 ▽=0 ▽=0		GENERAL TOLERANCES (UNLESS SPECIFIED)				DIMENSION STYLE IN/MM				SCALE 1:1		DESIGN UNITS INCH		THIRD ANGLE PROJECTION			
EC NO: UCP2015-4798		DRWN:MKIPPER		CHKD: JELL		APPR:FSMITH						mm		INCH		DRAWN BY JJS		DATE 1988/02/05		TITLE .062/(1.57) HOUSINGS PLUG & RECEPTACLE 9 CKT., .145/(3.68) CTRS							
S4												4 PLACES ± --- ± ---		± ---		CHECKED BY RW		DATE 1988/02/05									
												3 PLACES ± --- ± .010		± .010		APPROVED BY RAS		DATE 1988/02/05									
												2 PLACES ± 0.25 ± .014		± .014													
												1 PLACE ± 0.36 ± ---		± ---													
												0 PLACE ± --- ± ---		± ---													
												ANGULAR ±1/2°		± 1/2°		MATERIAL NO.		DOCUMENT NO.						SHEET NO.			
												DRAFT WHERE APPLICABLE MUST REMAIN WITHIN DIMENSIONS				SEE CHART		SD-1625-9*						1 OF 3			
																SIZE C		THIS DRAWING CONTAINS INFORMATION THAT IS PROPRIETARY TO MOLEX INCORPORATED AND SHOULD NOT BE USED WITHOUT WRITTEN PERMISSION									



OPTIONAL MOUNTING EARS
SEE DETAIL 3 OR 4
FOR VERSIONS AVAILABLE



RECEPTACLE

SEE SHEET 1 EC NO: UCP2015-4798 2015/05/13 DRWN:MKIPER CHKD:JBELL 2016/02/01 IAPPR:FSMITH 2016/07/11 S4	DESCRIPTION REV	QUALITY SYMBOLS ▽=0 ▽=0 ▽=0	GENERAL TOLERANCES (UNLESS SPECIFIED)			DIMENSION STYLE IN/MM		SCALE 1:1	DESIGN UNITS INCH	 THIRD ANGLE PROJECTION	
			mm		INCH		DRAWN BY JJS	DATE 1988/02/05	TITLE .062/(1.57) HOUSINGS PLUG & RECEPTACLE 9 CKT., .145/(3.68) CTRS molex		
			4 PLACES ± ---		± ---		CHECKED BY RW	DATE 1988/02/05			
			3 PLACES ± ---		± .010		APPROVED BY RAS	DATE 1988/02/05			
			2 PLACES ± 0.25		± .014		DOCUMENT NO. SD-1625-9*				
			1 PLACE ± 0.36		± ---						
			0 PLACE ± ---		± ---						
			ANGULAR ±1/2°				MATERIAL NO.		SHEET NO. 2 OF 3		
			DRAFT WHERE APPLICABLE MUST REMAIN WITHIN DIMENSIONS				SEE CHART				
			SIZE C				THIS DRAWING CONTAINS INFORMATION THAT IS PROPRIETARY TO MOLEX INCORPORATED AND SHOULD NOT BE USED WITHOUT WRITTEN PERMISSION				

13

12

11

10

9

8

7

6

5

4

3

2

1

9 CIRCUIT PLUG

PART NO.	ENG. NO.	EARS	MATERIAL	COLOR
03-06-2091	I625-9P	STANDARD	A	NATURAL
03-06-2092	I625-9P1	NONE	A	NATURAL
X 23-06-2091	I625-9P-C	STANDARD	C	NATURAL
X 23-06-2092	I625-9P1-C	NONE	C	NATURAL
X 04-06-6091	I625-9P1-B	NONE	B	NATURAL
03-06-7091	I625-9PBK	STANDARD	A	BLACK
46999-0717	I625-9P4	PREBENT	A	NATURAL

X=NOT TOOLED

9 CIRCUIT RECEPTACLE

PART NO.	ENG. NO.	EARS	MATERIAL	COLOR
03-06-1091	I625-9R	STANDARD	A	NATURAL
03-06-1092	I625-9R1	NONE	A	NATURAL
X 23-06-1092	I625-9R1-C	NONE	C	NATURAL
03-06-6092	I625-9R1BK	NONE	A	BLACK
50-36-1871	I625-9R4	PREBENT	A	NATURAL
X 50-36-1872	I625-9R4-C	PREBENT	C	NATURAL

X=NOT TOOLED

C

.060/(1.52) MAX. PANEL THICKNESS

A

±.005
(0.13)

B

±.005
(0.13)

RECEP.	.650 (16.51)	.552 (14.02)	.21 (5.3)	.22 (5.6)
PLUG	.752 (19.10)	.615 (15.62)	.20 (5.1)	.21 (5.3)
PART	DIM. A	DIM. B	DIM. C (STANDARD EAR)	DIM. C (PREBENT EAR)

RECOMMENDED HOLE PATTERN

NOTES:

1. MATERIAL CODES:
A-NYLON TYPE 6/6, 94V-2
B-NYLON TYPE 6/6, 94V-0
C-POLYPROPYLENE, 94V-0

2. FINISH: NONE

3. PRODUCT SPECIFICATION: PS-02-06

4. PACKAGING SPECIFICATION: PK-1625-003

5. HOUSINGS OF USE WITH MOLEX .062 DIAMETER TERMINALS.

△

 SOME PARTS MAY HAVE THIS CORNER CHAMFERED.

△

 ETCHED CIRCUIT I.D. NUMBERS ON HOUSING MAY OR MAY NOT BE PRESENT.

8. PARTS CONFORM TO CLASS B REQUIREMENTS OF COSMETIC SPECIFICATION PS-45499-002.

.21
(5.3)

DETAIL 3

STANDARD MOUNTING EAR
(SCALE 4:1)

.38
(9.6)

DETAIL 4

PREBENT MOUNTING EAR
(SCALE 4:1)

.18
(4.6)

SEE SHEET 1
EC NO: UCP2015-4798
2015/05/13
DRWN:KIPPER
CHKD:JBELL
2016/02/01
APPR:FSMITH
2016/07/11

DESCRIPTION

REV

QUALITY SYMBOLS

GENERAL TOLERANCES (UNLESS SPECIFIED)

	mm	INCH
4 PLACES	± ---	± ---
3 PLACES	± ---	± .010
2 PLACES	± 0.25	± .014
1 PLACE	± 0.36	± ---
0 PLACE	± ---	± ---

ANGULAR ±1/2°

DRAFT WHERE APPLICABLE MUST REMAIN WITHIN DIMENSIONS

DIMENSION STYLE IN/MM

DRAWN BY
JJS

DATE
1988/02/05

CHECKED BY
RW

DATE
1988/02/05

APPROVED BY
RAS

DATE
1988/02/05

MATERIAL NO.

SCALE 1:1

DESIGN UNITS INCH

THIRD ANGLE PROJECTION

.062/(1.57) HOUSINGS
PLUG & RECEPTACLE
9 CKT., .145/(3.68) CTRS

molex

SD-1625-9*

SHEET NO. 3 OF 3

THIS DRAWING CONTAINS INFORMATION THAT IS PROPRIETARY TO MOLEX INCORPORATED AND SHOULD NOT BE USED WITHOUT WRITTEN PERMISSION

ib_frame_C_P_AM.T
Rev. G 2012/01/11

12

11

10

9

8

7

6

5

4

3

2

1

Product Compliance Statement

September 19, 2017

Molex is committed to managing the use of chemical substances in accordance with governmental regulations, industry standards, and customer-specific requirements in order to protect the environment. For each part listed, this document provides:

- **EU RoHS Compliance Status.** EU RoHS status is declared per Directive 2011/65/EU and its subsequent amendments. Homogeneous materials of parts that are compliant to this legislation have less than 0.1% by weight each of lead, mercury, hexavalent chromium, PBB, and PBDE, and 0.01% by weight of cadmium. In situations where an exemption applies, the preceding limits, corresponding to the exempted substance(s), may be higher.

- **EU RoHS Phthalates Content.** EU RoHS Phthalates: DEHP, BBP, DBP, and DIBP, are declared if above 0.1% of the homogeneous materials of parts per amendment EU 2015/863 to the EU RoHS Directive (2011/65/EU). Restriction date on the use of these phthalates is July 22nd 2019.

- **EU REACH SVHC Content.** Substances of Very High Concerns (SVHCs) are declared if above 0.1% of the article per Regulation (EC) No. 1907/2006 and its subsequent amendments. The Candidate List of SVHCs is continually updated at <https://echa.europa.eu/candidate-list-table>.

- **Low-Halogen Status.** Homogeneous materials of parts that are considered Low-Halogen have less than 0.09% by weight each of bromine and chlorine, and less than 0.15% by weight of the sum of bromine and chlorine.

Molex's sole liability for incorrectly certifying a product shall be either replacement of the Molex product or, alternatively and in the sole discretion of Molex, return of the purchase price paid for the relevant Molex product.

For additional information regarding Molex's environmental initiatives and further explanation of this information, please visit www.molex.com



Haim Eliyahu
Manager, Global Product Compliance

Table A

Molex P/N	Part Description	RoHS Compliance Status	RoHS Phthalates (EU 2015/863)	REACH SVHC	Low-Halogen Status
0469990717	062 Pwr Conn Plug Prebent Pnl Mnt 9Ckt	Compliant	Not Contained	Not Contained Per -ED/30/2017 (7 July 2017)	Low-Halogen